

W. A. R. E. S.

Tuesday, February 4th 2014



Café Berlin



CAFÉ BERLIN

322 Massachusetts Avenue, NE,
Washington, DC - three blocks east of Union Station on
Massachusetts Avenue, NE, just before Stanton Park.
202/543-7656

W.A.R.E.S.-February 2014

Please respond by the Monday prior to the meeting. Payment in advance is appreciated, but we accept cash and checks at the door.

- \$40.00 includes dinner and the program.
- There will be a **cash bar**.
- Make checks payable to **W.A.R.E.S.**

You must indicate an entrée in your reply to Ken Briers, selecting a choice or Veal, Fish, Vegetarian, or Chicken entree for each person dining.

Mail replies to: **W.A.R.E.S. c/o Ken Briers**
736 5th ST NE Apt B
Washington, DC 20002-3587
or
ken.briers@gmail.com

CAFÉ BERLIN SPECIAL MENU

HOUSE SALAD

mixed greens with balsamic dressing

Choice of

Veal Ragout

Spätzle and broccoli

Scholle

Flounder filet with a spring onion-tomato ragu and buttered potatoes

Vegetarier Bot Boi

vegetarian pot pie

Marinated Chicken Breast

with a honey lime glaze, potato wedges and sautéed kale

DESSERT

Caramel Crème with fresh fruit garnish
Coffee or Tea

5:30 pm Attitude Adjustment Hour

6:30 pm Dinner

**7:45 pm Program: Construction of Dulles Corridor
Metrorail Project - Phase 1**
Presenter: Art Keffler, P.E.
Trackwork Engineer
Bechtel Infrastructure, Inc.

8:30 pm Adjournment

W.A.R.E.S. THANKS OUR SPONSORS

The following firms are providing financial assistance in 2013/14 for our scholarship program.

Your recognition of this support is appreciated.

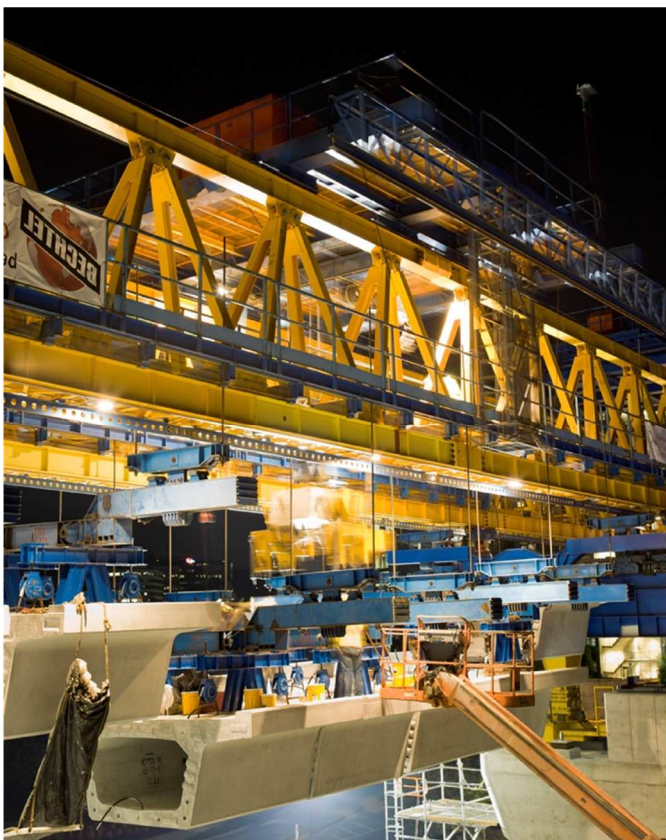
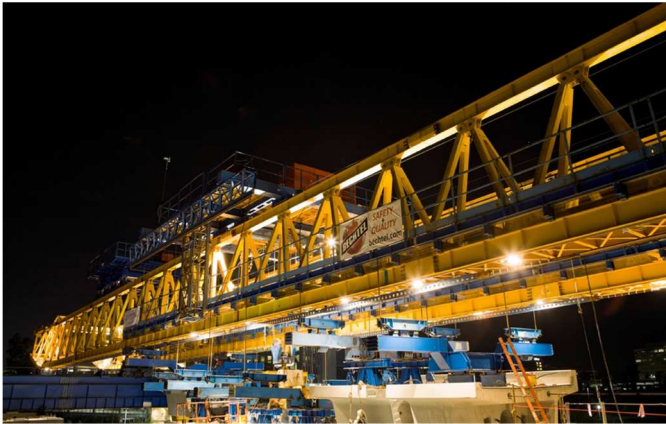
AECOM Transportation
AECOM Transportation
Amsted RPS
Amtrac Railroad Contractors of Maryland
ArcelorMittal Steel USA-Steelton
Atlantic Track
Delta Railroad Construction, Inc.
ENSCO, Inc.
Gannett Fleming, Inc.
GL Communications Inc.
G. W. Peoples Contracting Company, Inc.
Holland L. P.
Kimley Horn and Associates
L. B. Foster Company
The Okonite Company
Oldcastle Precast/Startrack
Pandrol USA
Parsons Brinckerhoff
Parsons Corporation
Progress Rail services
Rails Company
Rummel, Klepper & Kahl, LLP
Simpson Strong-Tie/Fox Industries
Truland Transportation
voestalpine Nortrak, Inc.
Whitman, Requardt & Associates, LLP

Contact **Chuck Tomasco** at ctomasco@trulandtransportation.com
if your firm would like to be a WARES Sponsor.

WASHINGTON AREA RAILWAY ENGINEERING SOCIETY

W. A. R. E. S.

Tuesday, February 4th 2014



Program: Construction of Dulles Corridor Metrorail Project – Phase 1
Presenter: Art Keffler, P.E.
 Trackwork Engineer
 Bechtel Infrastructure, Inc.

A 50-50 RAFFLE will be held for the benefit of the Scholarship Fund. Tickets are \$1.00 each, or six for \$5.00. The raffle payout will be divided into increments to help spread the wealth!

FUTURE MEETINGS

2014: April 8, October 7, December 9

NEED MORE INFORMATION ON W.A.R.E.S.? CONTACT AN OFFICER!

President	Scott Johnson AECOM, Baltimore, MD	(410) 637-1742 scott.johnson@aecom.com
Vice President	Zach Teague Kimley-Horn, Reston, VA	(703) 674-1300 Zach.teague@kimley-horn.com
Secretary	Ken Briers Washington, DC	(202) 841-6851 Ken.Briers@gmail.com
Treasurer	Rick Steininger L.B. Foster Company	(330) 533-3416 ext. 101 rsteininger@lbfoster.com
Program Chair	Devin Rouse F.R.A., Washington, D.C.	(202) 493-6185 devin.rouse@dot.gov
Sponsor Chair	Chuck Tomasco Truland Transportation Alexandria, VA	(703) 560-4600 ctomasco@trulandtransportation.com

W.A.R.E.S. MEMBERSHIP

All professional railroaders, consultants, suppliers and educators interested in railway engineering, including roadway, bridges, buildings, signaling, communications and electric traction are invited to join **W.A.R.E.S.**

- **Membership is free.**
- **If you would like to join, contact Ken Briers at ken.briers@gmail.com**
- Please provide any necessary corrections to your contact information.
- If we have not heard from you for two (2) years you will be dropped from the mailing list.